



## Product Datasheet

<b>Product name</b>	Rabbit Polyclonal Antibody to $\beta$ -Actin
<b>Catalog No</b>	CB100996
<b>Host and isotype</b>	Rabbit IgG
<b>Species reactivity</b>	Human, Mouse
<b>Size</b>	0.1ml

### Description

Actin, a ubiquitous protein in eukaryotes, is the major component of the cytoskeleton. At least six isoforms are known in mammals. Nonmuscle  $\beta$ -actin and  $\gamma$ -actin, also known as cytoplasmic actin, are predominantly expressed in nonmuscle cells, controlling cell structure and motility.  $\alpha$ -Actin expression is limited to various types of muscle, whereas  $\beta$ -actin and  $\gamma$ -actin are the principle constituents of filaments in other tissues.

### Immunogen

Synthetic peptide at the N-terminus of Beta-Actin. The N-terminus of Beta-Actin is highly conserved with Gamma-Actin.

### Applications

Western Blot: 1:5,00 – 1:1,000, IP: 5 mcg/mg lysate. Determining optimal working dilutions by titration test.

### Formulation

1mg/ml in PBS, pH 7.4 with 0.05% sodium azide.

### Storage

Stable for 1 year at  $-20^{\circ}\text{C}$  from the date of shipment. For maximum recovery of product, centrifuge the original vial after thawing and prior to opening the cap. Aliquot to avoid repeated freezing and thawing. Aliquot will be stable at  $4^{\circ}\text{C}$  for 3 months

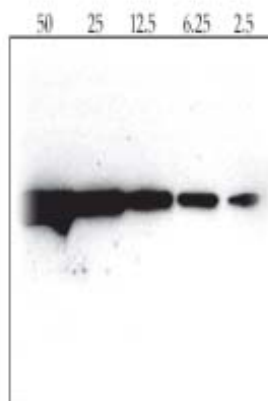


Fig. Western blot analysis of 293 lysates at different amount of total proteins ( $\mu\text{g}$ ) probed with anti- $\beta$ -actin antibody (G046).

**\* For Non-Clinical Research Use Only \***